

STERLING LAKES AT IOWA COLONY

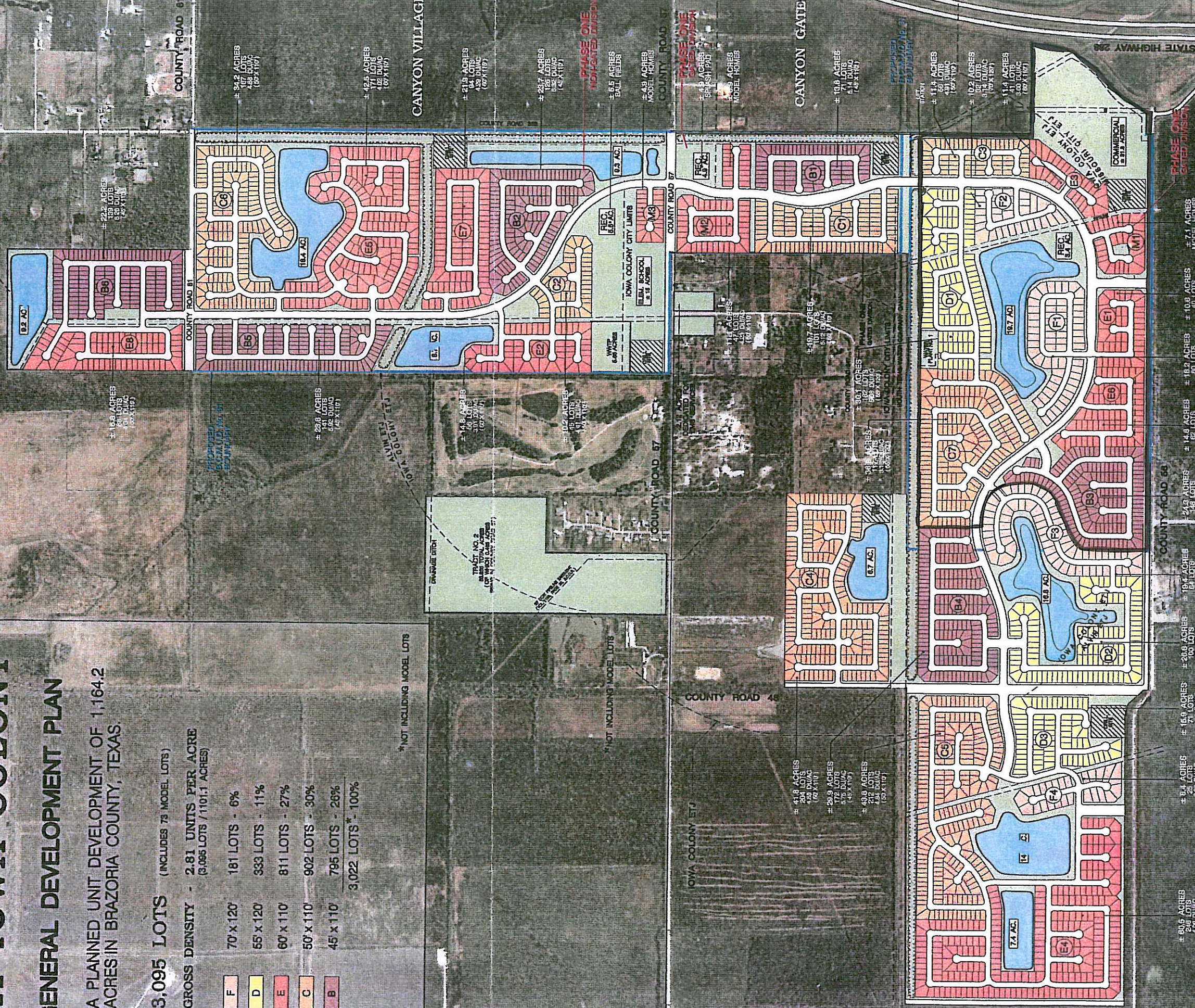
GENERAL DEVELOPMENT PLAN

A PLANNED UNIT DEVELOPMENT OF 1,164.2 ACRES IN BRAZORIA COUNTY, TEXAS.

3,095 LOTS (INCLUDES 78 MODEL LOTS)	
GROSS DENSITY - 2.81 UNITS PER ACRE (3,095 LOTS / 1101.1 ACRES)	
F	181 LOTS - 6%
D	333 LOTS - 11%
E	811 LOTS - 27%
C	902 LOTS - 30%
B	795 LOTS - 26%
3,022 LOTS* - 100%	

*NOT INCLUDING MODEL LOTS

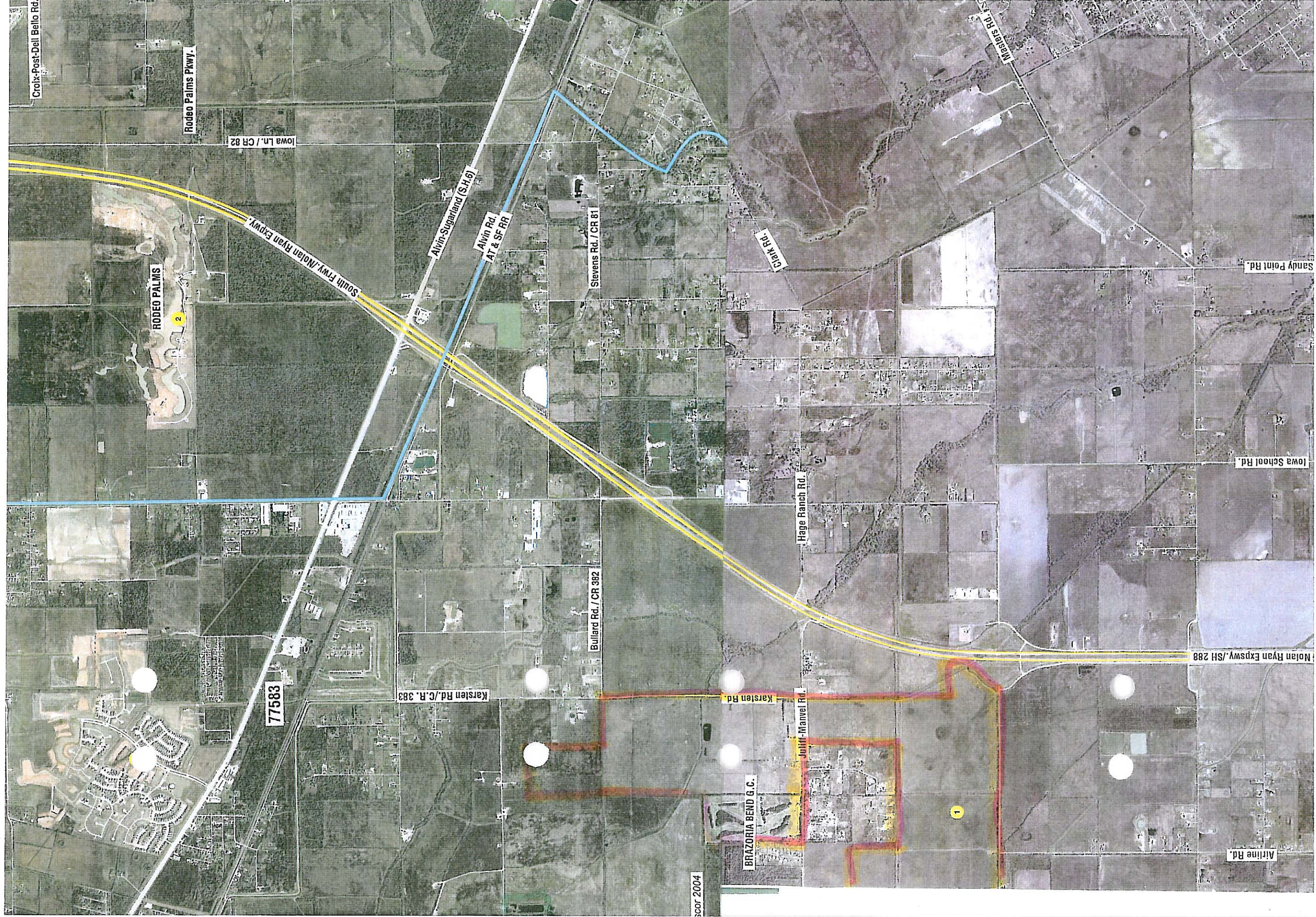
*NOT INCLUDING MODEL LOTS



CANYON LAKES

CANYON GATE

CANYON VILLAGE



Croix-Post-Dell Bello Rd.

RODEO PALMS

2

Rodeo Palms Pkwy.

Iowa Ln. / CR 82

South Fwy./Noan Ryan Expwy.

Alvin-Sugarland (S.H.6)

Alvin Rd.
AT & SF RRR

Stevens Rd. / CR 81

Gar Rd.

Waters Rd.

Sandy Point Rd.

Iowa School Rd.

Hage Ranch Rd.

Bullard Rd. / CR 382

Noan Ryan Expwy./SH 288

77583

Karsten Rd./C.R. 383

Karsten Rd.

Joliff-Mamuel Rd.

BRAZORIA BEND G.C.

1

Airline Rd.

scor 2004