

FOR THE EXCLUSIVE USE OF ED@KALED.COM

From the Triangle Business Journal:

<https://www.bizjournals.com/triangle/news/2019/10/08/child-care-company-to-open-locations-near-new.html>

Child care company to open locations near new residential communities in Triangle

Oct 8, 2019, 7:25am EDT

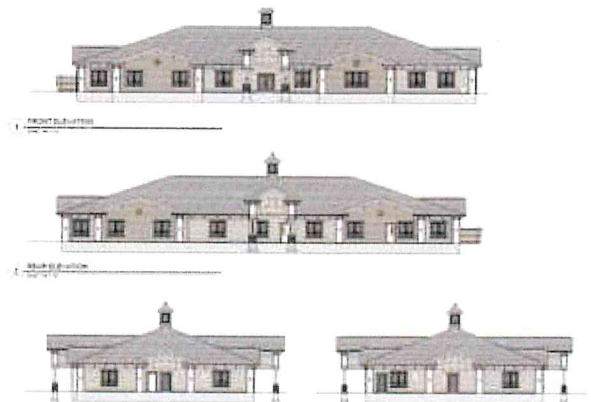
A Virginia-based child care company is bringing its first North Carolina locations to the sites of two proposed mixed-use developments in the Triangle.

Lightbridge Academy of Virginia Beach has announced it plans to open the day care facilities next year in Apex and Holly Springs. Both locations will feature 8,000- to 11,000-square-foot facilities with 5,000-square-foot playgrounds adjacent to the buildings.

In Holly Springs, the day care will be situated on 2.4 acres at 1840 Ralph Stephens Road at the corner with S. Main Street.

The facility will be near the Shoppes at Holly Springs as well as the site of a newly proposed mixed-use development. Plans for the proposed "Village Gate" community call for a 20-acre, master-planned commercial and residential development featuring workforce housing, pedestrian walkways and nearby shopping centers and amenities.

The development would likely feature a wide variety of housing, including single-family, townhomes, condominiums and apartments, as well as provisions for workforce housing, which would provide affordable housing to those that work in the area.



C/O LIGHTBRIDGE ACADEMY

A child care company plans to open two facilities in the Triangle.

The Apex Lightbridge Academy will be situated at 1075 Newland Ave. and located in the upcoming Sweetwater Town Center.

That mixed-use project will be the commercial portion of the Sweetwater subdivision off Route 64 west of downtown Apex. The town center will take up 45 acres and feature 400,000 square feet of space including hotel, grocery, retail and 230 apartment units across buildings up to five stories.

The town center, to be situated at 2775 Core Banks Street, is a joint project between the Kalikow Group of New York and ExperienceOne Homes of Cary. The core of the development features five mixed-use buildings, each four to five stories, situated around an event lawn and concert stage.

It will also feature restaurants and retailers to form an urban area for residents and visitors to congregate.

Both day cares will be owned and operated by Rebecca Grovenstein, an elementary school teacher, along with her husband Brian, who works as an investment banker. Rebecca Grovenstein says the two were looking to start a business that would combine their skills and match with their passion for child care, education and their home town of Apex.

“We wanted to look for a way to make a difference in Wake County and in our hometown,” she says.

They decided to look into early child care, with an emphasis on teaching children so-called soft skills — such as communication and relationship-building.

Children enrolled at the school can also take lessons in music and sign language.

“The kids get this great unique education and experience from coming to Lightbridge,” Grovenstein says. “Children, they learn through play. When you watch a child play, they're learning a lot. They're learning to communicate with their peers and learning to share.”

Grovenstein says that, depending on the construction and permitting process, both day care facilities could open in the spring of 2020.

Caleb Harshberger

Staff Writer